

HAKITEC®

There's no bad weather

 **HAKI**

HAKITEC protects your site against bad weather!

Rain and snow. Cold and wind. There's no bad weather. HAKITEC protects your site and makes your work more profitable!

Today, it is almost as common to use weather protection on building sites as it is to use an umbrella when it rains. The reason is simple. You gain by it.

Save 20% in working days

Many might wonder whether it is worth using weather protection. But the truth is that you benefit from better quality construction and can work more efficiently in all weathers - pouring concrete, painting, insulating, laying sheet metal, doing carpentry or welding. In fact, you can save 20% in terms of working days if you plan carefully. And because you enjoy good weather 365 days of the year, it is also easier to keep to the schedule and ensure the success of the project.

Avoid expensive moisture damage

Another factor is moisture. You avoid the risk of trapping moisture in the structure if you use weather protection. As you surely know, a number of well known construction projects have been affected by moisture damage in recent years. Damage that is extremely expensive to deal with once the building has been completed. HAKITEC is your insurance against unpleasant surprises.

Improve well-being at the site

HAKITEC brings not only financial benefits. The workers' sense of well-being and the atmosphere at the site also improve. Employees can work in a dry and comfortable environment. They avoid damp work clothes and can carry out several operations in parallel. Using HAKITEC, there is also less risk of accidents and work-related injuries.





You can cover the site in question or protect an entire building

HAKITEC – the most versatile weather protection there is!

No other weather protection system is as versatile as HAKITEC. There are so many options and so many applications. There is always a solution to suit you.

We have many different types of weather protection that provide a dry and safe working environment. You can easily cover the site in question or protect an entire building.

HAKITEC is available as a total covering, as a fixed or wheeled roof, as a wheeled roof section over an opening for material access, as a temporary storage unit and as a field workshop.

Easy to assemble and few components

HAKITEC has unusually few components. This makes the weather protection very easy to set up. If you have access to a crane, you can assemble the protection on the ground and then lift it into place. It goes without saying that we train you in assembling the system and provide technical support if you need help.

Lattice beams with superior strength

HAKITEC is the generic term for a complete system for weather protection and covering. The system is based on aluminium lattice beams of depth 750 mm and 450 mm. The robust beams provide very strong structures with large spans and a long service life. HAKITEC can be used again and again.

HAKITEC 750

HAKITEC 750 has a robust lattice beam that is 750 mm deep. The beam is available in various lengths and angles, making it easy to tailor the roof trusses to the desired span and form to give a gable roof of pitch 15° or 22.5°, a polygonal roof or a monopitched roof. You have a wide range of options.

The weather protection is assembled in place quickly and safely or on the ground in long sections that are lifted into place using a crane.

Traditional sheeting

HAKITEC 750 can be covered with the traditional HAKITEC sheeting on braced guardrail frames with the aid of fixing beams. The sheeting is of heavily reinforced LD polythene.

HAKITEC 750 with HAKI Trak

This weather protection has the same framework as HAKITEC 750. The only difference is the sheeting. HAKITEC 750 with HAKI Trak has an extremely hardwearing sheeting that is very easy to fit. The system consists of sheeting with keder beading and aluminium tracks. The sheeting is manufactured in fixed lengths, but can easily be provided with extra pockets with 1 metre between centres at each end for greater flexibility.

A 24-metre sheet can then be used on roofs with widths from 18 to 24 metres several times in succession.

The tracks are tailored to the length of the lattice beams and fixed quickly and simply with track clamp saddles and spring pins. The tracks are joined using track joint plates and seals. A ridge roller is fitted at the ridge for simpler fitting and stretching of the sheeting.

Platform for simpler assembly

The roofs are assembled simply and safely from a platform at one end of the roof and then rolled out in sections as they are completed. The cost of a crane can be minimized, since all material is hoisted up to the platform.

HAKITEC 450

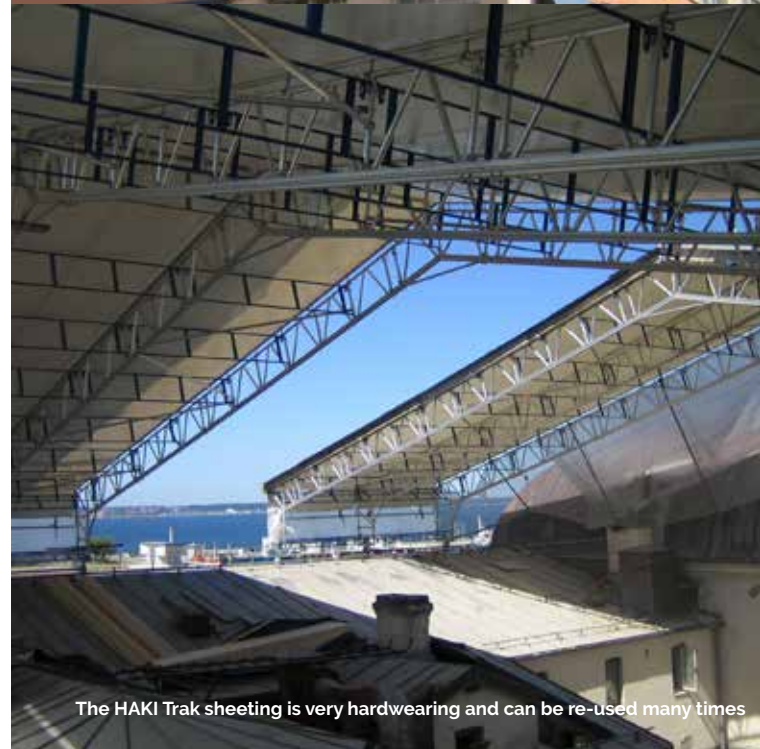
The traditional HAKITEC 450 weather protection can be built as a gable roof of pitch 15° or 30° or as a monopitch roof. It is easy to adapt the weather protection to your immediate requirements with spans up to 12 metres or 18 metres with reinforcement. The roof is covered with robust HAKITEC sheeting that is suitable for all types of covering.

Easy to assemble

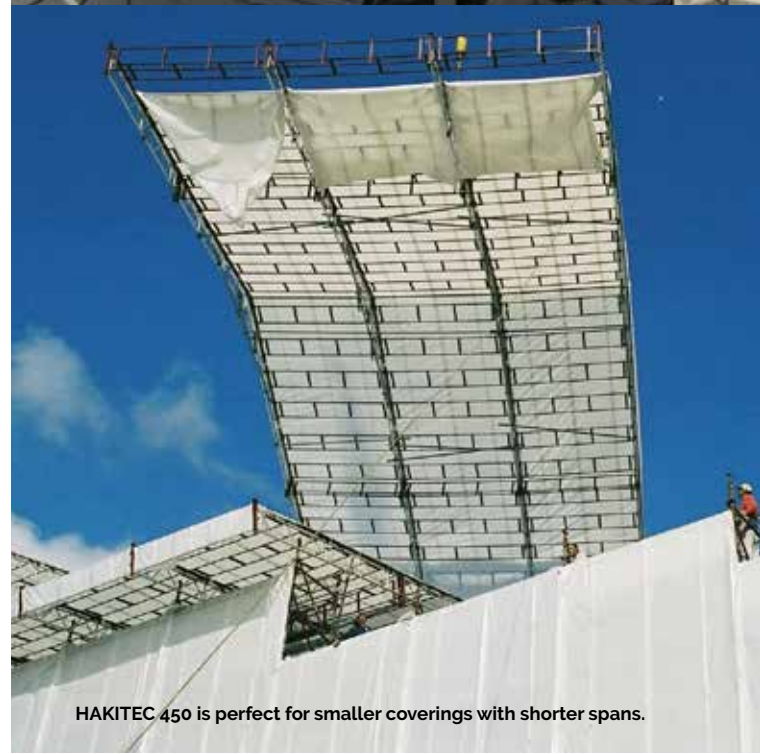
The weather protection is assembled in place or on the ground in sections that are lifted into position using a crane. It is also possible to erect wheeled sections over openings to facilitate the transport of materials in and out.



HAKITEC 750 boasts superior spans



The HAKI Trak sheeting is very hardwearing and can be re-used many times



HAKITEC 450 is perfect for smaller coverings with shorter spans.

There are lots of options!



HAKITEC 750 with HAKI Trak

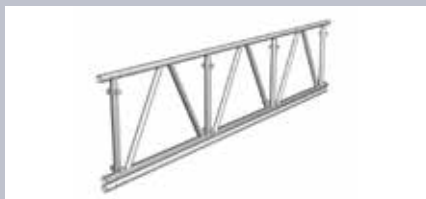
The roof is assembled safely from an assembly platform at one end of the roof and then rolled out section by section. The robust roof structure is designed for large spans and high loads.



HAKITEC 450

Covered by robust HAKITEC sheeting, including walls. Suitable for shorter spans.

HAKITEC 750



Frame 750 AL

L=1250, 2250, 3250 and 6250 mm



Angle frame 750 AL

15°, 22.5° or 37.5°



Connector tube 750

Connector tube 750 should be fitted using 4 spring pins (12 mm) per connector tube



Plan brace 750 AL



Beam adapter 750

Incl. 2 clamping devices
Adjustable for 12-22° and 0°



Y frame 750

HAKI TRAK



Straight track

L=1250, 2250, 3250 and 6250 mm



Ridge track + Eave track

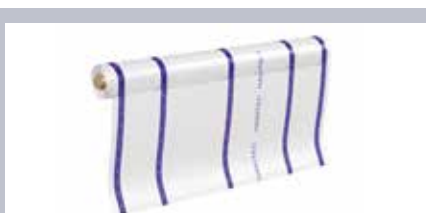
15°, 22.5° or 37.5°



Track joint

Track joint plate, track joiner AL and seal

HAKITEC



HAKITEC

Reinforced plastic sheeting, 250 g/m²
Blue stripes, holes 15 mm at 0.1 m centres



HAKITEC flame retardant

Reinforced plastic sheeting, flame retardant, 200 g/m²
White stripes, holes 15 mm at 0.1 m centres



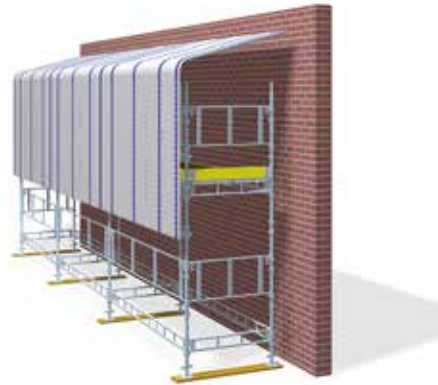
Façade Light

Reinforced plastic, 170 g/m²
White stripes, holes 15 mm at 0.1 m centres



HAKITEC 450 Shelter

With simple shelter legs and wheels use as mobile protection when carrying out operations such as pouring concrete. Span 8.3 m or 12.2 m.

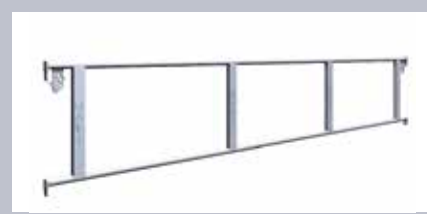


HAKI Canopy

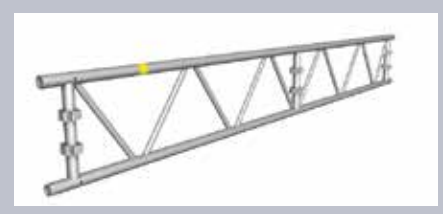
Protection on the top lift. Canopy supports are combined with extension tubes for different scaffolding widths. Best moved using a crane.



Spring pin
Diameter 12 mm and 16 mm



Guardrail frame
With spring locking catch



Lattice beam 450 AL
L=2220, 4100, 6100 or 8100 mm
With and without pockets on verticals and holes for track clamp saddles



Rolling roof wheel



Triangular rail



Ridge connector + spring pin
The ridge connectors should be fitted using 4 spring pins (12 mm) per connector

HAKITEC 450



Track clamp saddle
Fitted to lattice beam 750 AL using 1 spring pin (12 mm)



HAKI Trak sheeting
PVC-coated polyester fabric, 640 g/m²
With keder beading

OTHER COMPONENTS



Fixing beam
For fixing guardrail frame



Fixing plate HAKITEC
Fixed using 6 screws for sheet metal per plate and 2 screws per ridge plate



Shelter leg 450
For lattice beam 450 AL



Canopy roof
Canopy support - bay width 700-770 mm.
Canopy support + 1 extension tube = bay width 1050-1250 mm.
Canopy support + 2 extension tubes = bay width 1655 mm



HAKI AB • SE-289 72 Sibbhult, Sweden • Tel +46 44 494 00 • info@haki.se • www.HAKI.com

